

Before we start...

- Get some coffee (provided by our PTA)
- Check in on the Mood Meter
- Answer the question on the chart paper
- Find a seat

Welcome back to Sand Point Elementary



But, first an activity

Family Bingo

- One person for each space
- No repeats
- Say “BINGO” when all spaced are filled



Who are we?

At Sand Point Elementary, we are a community of...

- Lifelong Learners
- Responsible Global Citizens
- Champions of Our Own Success

What is special about how we serve children?

- School Counselor
- RULER
- Literacy Enrichment Block for ALL students (ACORN BLOCK)
- Math Differentiation
- After-school Enrichment



When and how do I drop off my child?



School Starts at 7:50am

- Your child should be on the playground waiting for their teacher to pick them up before 7:50am.
- Children will say goodbye to you and line up with their homeroom teacher at 7:50am in the play court
- After your child goes to class you are welcome to stay on the play court to socialize but CANNOT follow them to their class or locker

When and how do I pick up my child?

- School ends at 2:05 pm
- You can park and pick up your child up on the playground.
- You can stay in your car and pick up your child in front of the school by the white curb.
- Bus riders will dismiss from the cafetorium.
- After care/enrichment students are picked up by the Y staff.

Children must be present to learn

5 or more absences each semester is considered truant for the year

Why It Matters

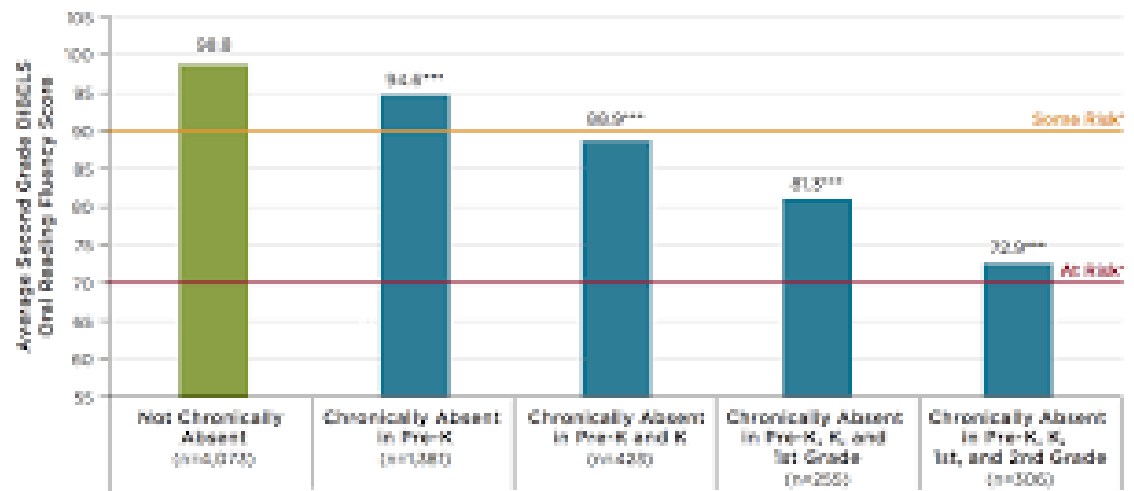
If children don't show up for school regularly, they miss out on fundamental reading and math skills and the chance to build a habit of good attendance that will carry them into college and careers.

Preliminary data from a California study found that children who were chronically absent in kindergarten and 1st grade were far less likely to read proficiently at the end of 3rd grade.

Who Can Read on Grade Level After 3rd Grade?†

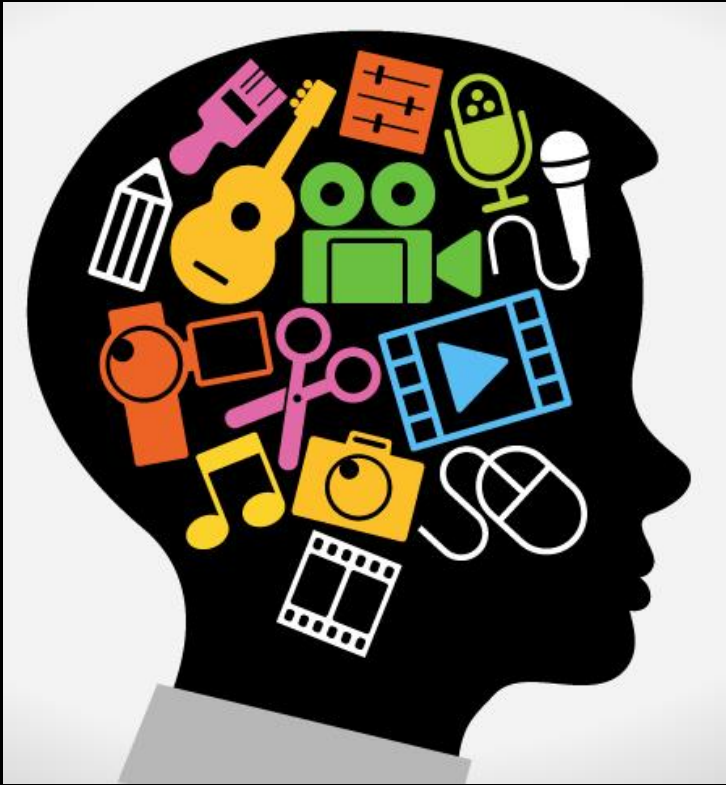


The more years students are chronically absent in the early years, the more at-risk they are for needing reading interventions by the end of second grade.



† Adapted from Early Elementary Grades Association with Student Achievement, School Attendance, and Third Grade Outcomes Applied Survey Research, May 2011.

What enrichment is my child getting during the school day?



- ACORN Enrichment Block – at least 35 minutes 3 days per week
- Library/Lab
- PE
- Music – Vocal Music, Storytelling, and Drumming with African Roots for K-3 and Instrumental Music for 4/5
- Art
- Islandwood Environmental Science Excursion- for 4/5 only
- Dancing Classroom- for 4/5 only

What about homework?

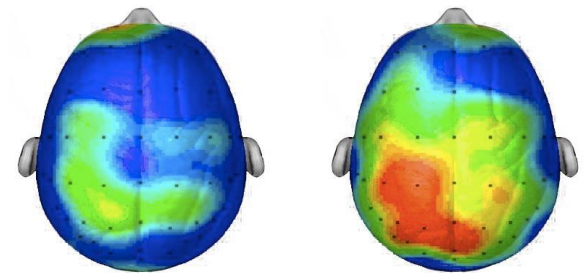
- Research shows homework has almost **NO** impact on elementary school students learning (Hattie-0.29 effect size)
- What can I do to support my child's learning at home?
 - Read with your child
 - Ask them about their day
 - Eat dinner together
 - whenever possible
 - Make sure they get at least 8 hours of sleep



What about breakfast, lunch and recess?

- **Grab and Go Breakfast**
 - pick up school breakfast on their way in
 - Anyone can bring breakfast from home
 - 10 minute breakfast in classrooms
- **Lunch= 20 minutes, Recess= 45 min**
 - Morning Recess 15 min
 - Lunch/Recess 20 min for eating, 20 min for play
 - Afternoon Recess 10 min

Composite of 20 student brains taking the same test



After sitting quietly

After 20 minute walk

Research/Scan compliments of Dr. Chuck Hillman University of Illinois

What should my child bring to the first day?

- ONLY BRING A...
 - Backpack
 - Water bottle
 - Lunch



- Our amazing PTA buys supplies for the whole school and will ask you for a donation- check the welcome packet for more information

How do I get information from Sand Point?

- WELCOME PACKET
- Website
- Kid Mail
- Squirrel News
- Classroom newsletters
- School Messenger email and phone calls
- PTA
 - Website (<http://sandpointelementarypta.org>)
 - Remind text blasts
 - Facebook (sand point elementary pta)

How can I get involved at Sand Point?

- Join the PTA- Available Positions
 - Events Chair, Cashier, Safety Chair, aftercare/enrichment chair, ELL Chair, and Sustainability Chair
- Donate
- Volunteer
 - Library
 - Garden
 - Playground
 - Cafeteria
- Be your child's room parent

Questions?